

# Perceptions of paternal resemblance predict family violence

Rebecca L. Burch, Gordon G. Gallup

By:

Stephanie Peterson

# THEORY



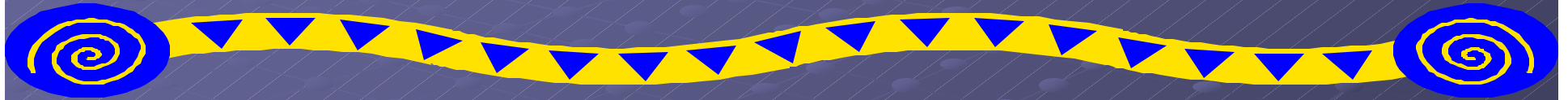
- Attempts to investigate:
- Relationship between paternal resemblance
- Spousal abuse
- Child abuse among convicted spouse abusers

# Hypothesis

- Attempting to find:
- Men's paternal resemblance to their children will reflect the level of both the child and spousal abuse (biological children vs. stepchildren)



# THEORETICAL CONSTRUCT



- The paternal resemblance correlates to abusive behavior of spouse and child

# Operational Definition

- Survey: demographics of race, religion , marital status, & incomes
- Respond to an Abusive Behavior Inventory Questionnaire to distinguish between abusive/non-abusive

Quasi-Experimental or not?

!!!!!!Quasi-Experimental!!!!!!

(Correlation Study)



# SUBJECTS

55 men convicted of spousal abuse  
referred by the Men's Opportunity  
Program at Adirondack Samaritan  
Counseling Center in Glens Falls,  
New York

# SCALE OF MEASUREMENT

Interval:

Since used surveys and the Abusive Behavior Inventory



# What did I think of the Study?

Seeing that this was a correlational study, it had little to argue about.

Keep in mind this is NOT a cause and effect experiment, rather an interpretation of paternal resemblance and child and spouse abuse

# RESULTS



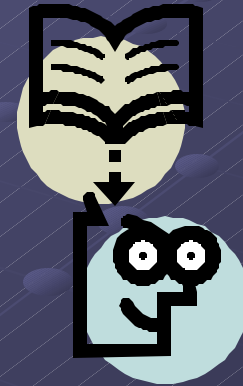
Paternal relationships biologically related, were significantly better than relationships with unrelated children.

# Did the Operational Def. -> Theoretical Construct?

Yes –

-Survey

-Abuse Behavior  
Inventory  
Questionnaire



THE END